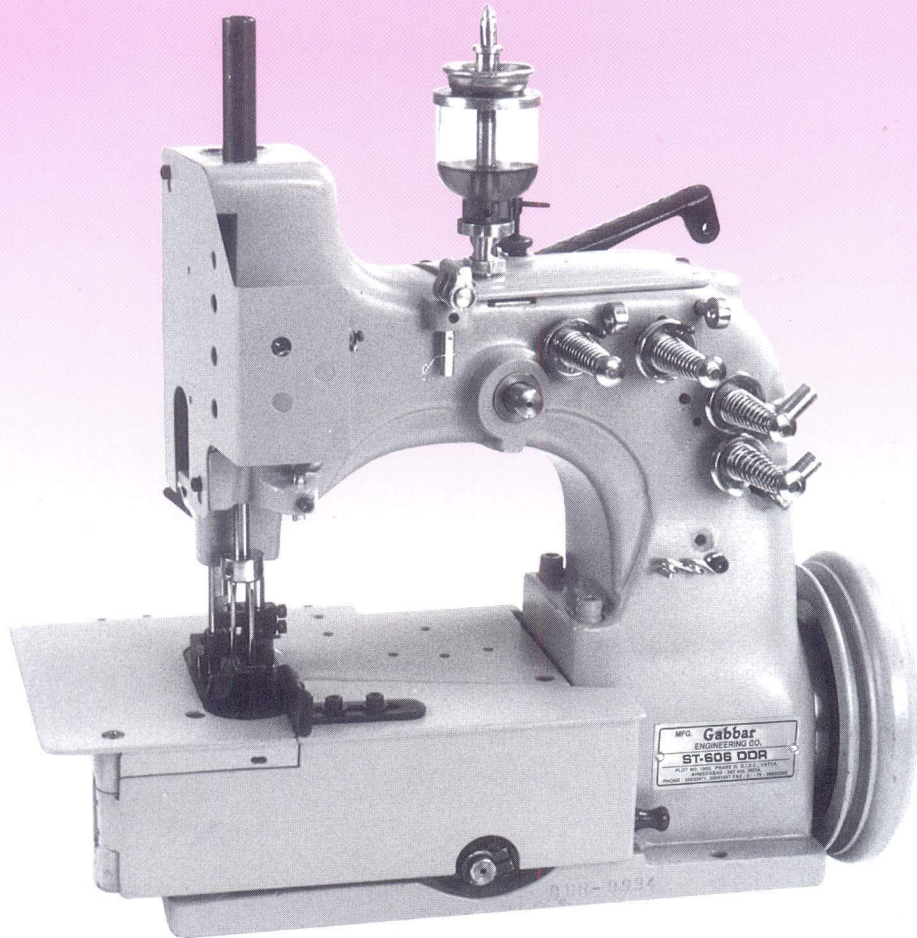


# **Gabbar**™

## **BIG BAGS SEWING MACHINE**

### **INSTRUCTION MANUAL/PARTS LIST**



**Model No. ST 606 DDR**

Manufactured By :

 **Gabbar  
Engineering Co.**

# **CONTENTS**

1. SAFETY PRECAUTION AND CHECK
2. INTRODUCTION
3. MACHINE DESCRIPTION
4. APPLICATION
5. SPECIFICATION
6. THREADING
7. LUBRICATION OF THE MACHINE
8. ADJUSTING INSTRUCTION
  - 8-1. SETTING NEEDLE
  - 8-2. ADJUSTING LOOPER
  - 8-3. SETTING OF BALL JOINT ASSY. (603528A)
  - 8-4. SETTING HEIGHT OF NEEDLE BAR
  - 8-5. ADJUSTING FEED DOG
  - 8-6. ADJUSTING STITCH LENGTH
  - 8-7. ADJUSTING NEEDLE GUARD
  - 8-8. ADJUSTING PRESSURE OF PRESSURE FOOT
9. PARTS LIST

# SEFETY PRECAUTION & CHECK

## **A) SAFETY PRECAUTION :**

- a) Before putting the machines described in this manual into service, carefully read the instructions. The starting of each machine is only permitted after taking notice of the instructions and by qualified operators.
- b) Before putting the machine into service also read the safety rules and instructions from the motor supplier.
- c) Always turn power off before threading, oiling and adjusting the machine or replacing parts.
- d) Make sure, all covers and guards must be in position before operating machine.
- e) Do not touch on the machine when it is running.
- f) Wear safety glasses.
- g) Any work on the electrical equipment must be done by an electrician or under direction and supervision of special skilled personnel.
- h) Do not touch Needle, Pulley, Belt and moving parts when machine is in operation.
- i) Observe the national safety rules valid for your country.

## **B) CHECK :**

The Sewing Machine head is made of small precision parts. It must be handled carefully, kept clean, and maintained regularly.

- a) Remove dust from throat plate, feed dog grooves & around looper eyelet everyday after the work.
- b) Check the machine for loose screws and tighten them, if any once a month.
- c) The service life of the machine depends on the level of maintenance.

# INTRODUCTION

## 2) INTRODUCTION :

We express our heartfelt thanks for your purchase of the sewing machine.

For all user of the machine, this Instruction Manual contains important information on how to operate the machine safely, properly and most efficiently. Observing these instructions helps to avoid danger, to reduce repair costs and downtimes and to increase the reliability and life of the machine.

Please read this book carefully, before use of the machine, to operate it under the best condition. Thus the machine will make a splendid contribution to your stitching business with its durability for a long time.

## 3) MACHINE DESCRIPTION :

Double Needle, Plain Feed, Double Locked, Four Thread, Heavy duty chain stitch machine.

## 4) APPLICATION :

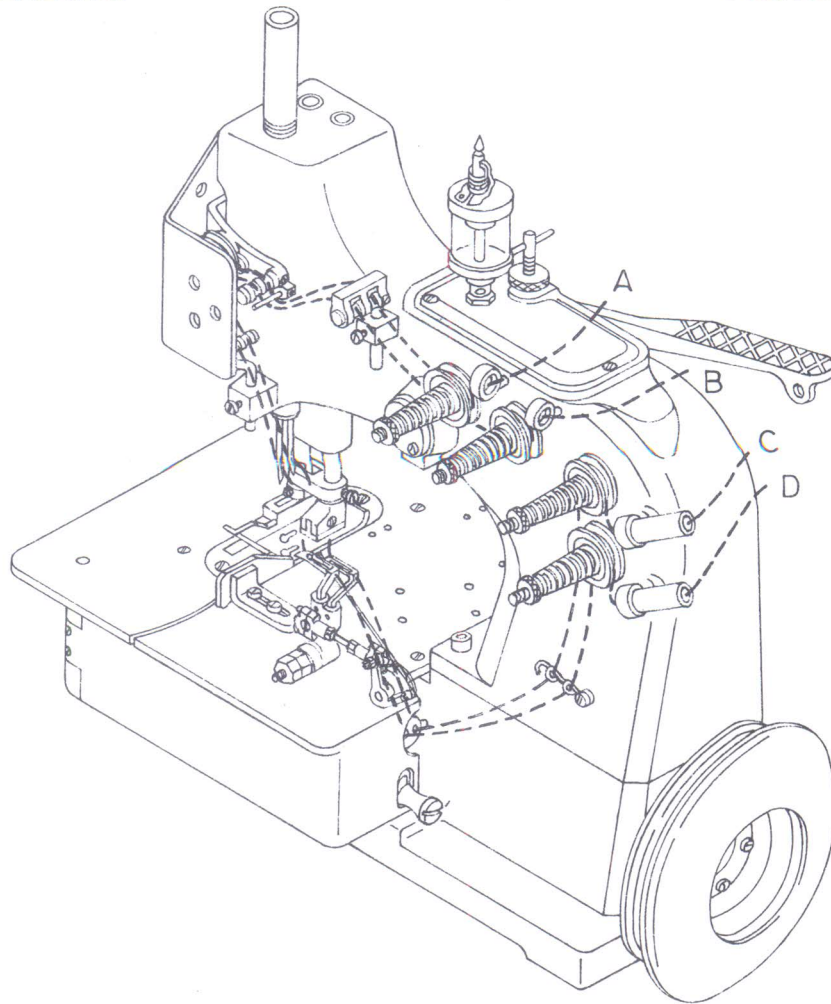
For Seaming and Heaming of light to heavy weight fabrics. made from woven polypropylene, suitable for omega sewing on CONTAINER BAGS.

## 5) SPECIFICATION :

Model No.	606 DDR
Max. Speed	1800 R.P.M.
Working Speed	1600 R.P.M. (Approx.) (Depends on Sewing Materials)
Stitch Range	6 to 13 mm
Max. thickness of Materials	12 mm
Needle Type and Size	DR X 2-28 (ORGEN)
Thread	Multiple filament, Fabricated Yarns
Motor Speed	1 H.P. 2850 R.P.M. 1 PHASE OR 3 PHASE
Lubrication	Semi Automatic

## THREADING

FIG. NO. 1



### 6.) THREADING (FIG. NO. 1)

Threading must be made correctly according to the illustration in fig and take care to the fact that incorrect threading may cause some time skip stitching, threading breakage and lack of uniformity in the sewing performance.

### THREAD TENSION

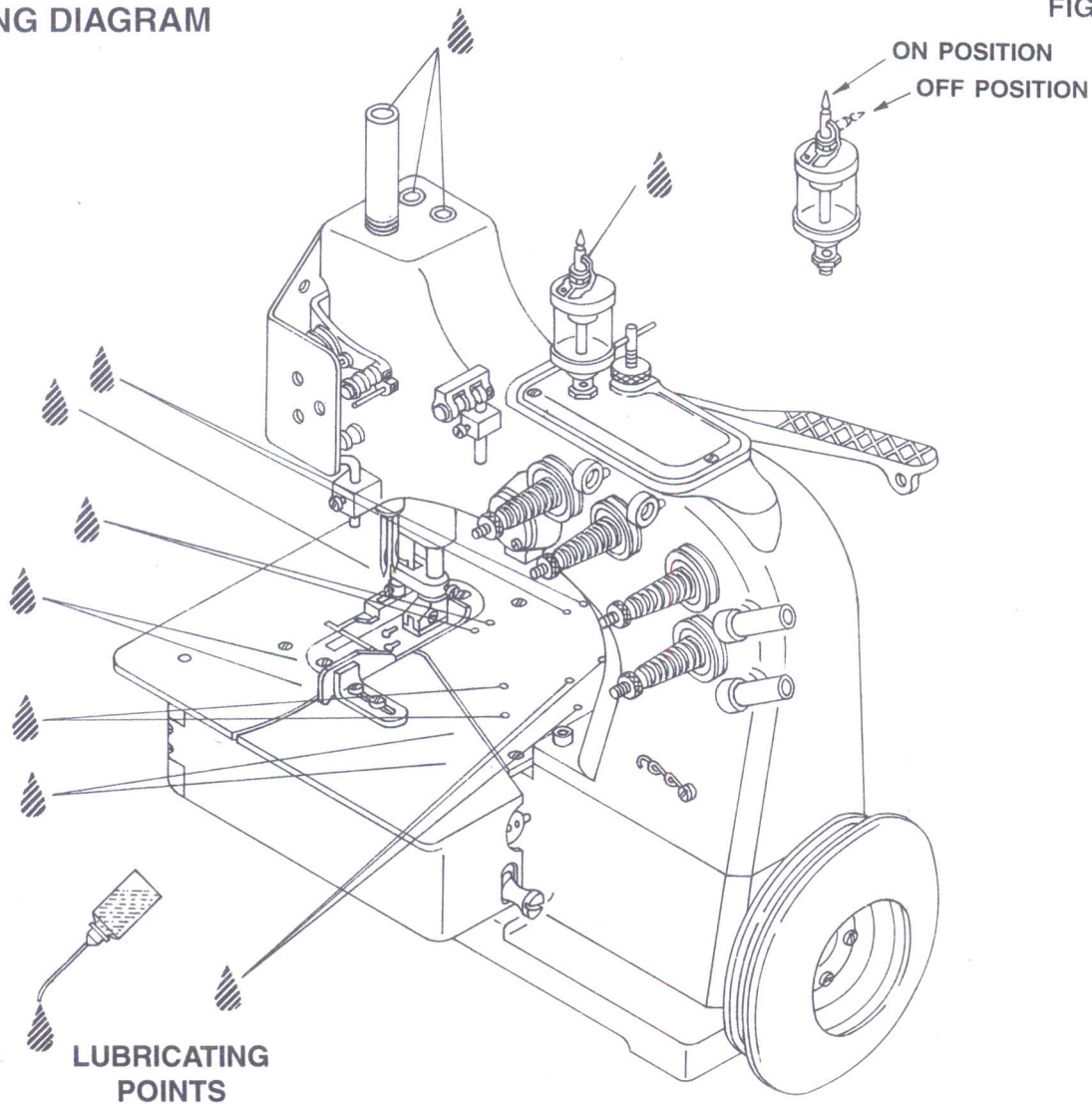
The thread tension must be adjusted according to sewing fabric, thickness, sewing thread, stitch length etc. Therefore the pressure of tension nuts of thread guides must be adjusted in each individual case.

Regulate the tension on the threads so that uniform stitches are produced. In general the tension applied to the needle thread is slightly higher than the tension applied to the looper thread.

Turning the tension nuts clockwise increases the tension, turning counterclockwise decreases the tension.

## OILING DIAGRAM

FIG. NO. 2



### 7.) LUBRICATION OF THE MACHINE (FIG. NO. 2)

The Machine of Class ST 606 DDR have to be Cleaned and lubricated twice a day before the morning and afternoon start on the lubricating points indicated on the oiling diagram. (Fig. No. 2) The sight feed oiler has to be kept filled and should be adjusted so, that it feeds two to three drops of oil per minute. The oiler has to be refilled latest, when  $\frac{2}{3}$  of the oil are used up.

For Lubrication we recommend "MOBIL OIL NUMBER 20W-40 OR 40 NO.

Before operating a new machine for the first time, the sight feed oiler, which come with the accessories of the machine, have to be screwd in.

The sight feed oiler has to be adjusted.

All lubricating points, indicated on the oiling diagram have to be oiled. When the machine comes in the working operation make sure that sight feed oiler must be in on position as shown in the Fig. No. 2.

When the machine is out of operation, the oil flow can be stopped by tilting the lever on the sight feed oiler as shown in Fig. No. 2.

## 8) ADJUSTING INSTRUCTION

The Adjusting Instruction portion of this manual explains in details the proper setting for each of the components related to forming the stitch and completing the function of the machine. Figures are used to illustrate the adjustments using reference letters to point out specific item discussed.

### 8-1) SETTING NEEDLE

Before adjusting the machine, insert a new needle into the needle holder (606352) as deep as it will go. The long groove of the needle should face the operator. Tighten the needle screw (606357) firmly.

#### NOTE :

Improper needle setting, a crooked needle, and worn out needle point and hole are possible causes of thread breaking and skipping.

### 8-2) ADJUSTING LOOPER : (FIG NO:3)

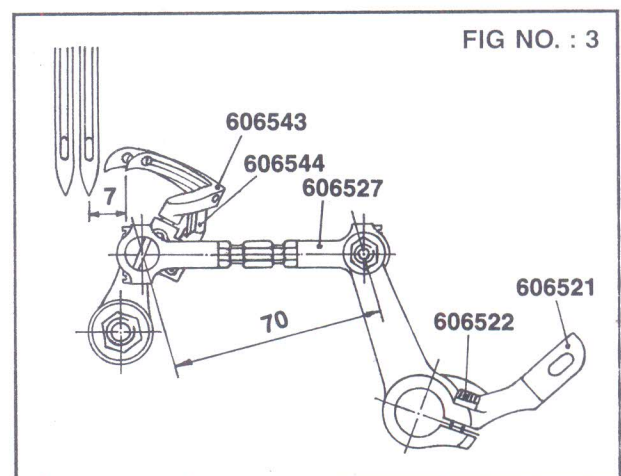
Place the Loper in the Loper Holder and when Needle are at their Lowest Position and Loper is at Extreme right of the movement distance of Loper Point from centre of Needle shall be 7 mm this adjustment is made by loosening screw. (606522)

#### NOTE :

1. If the distance between the needle center and the looper point is shorter than 7 mm, "double stitching" will be caused while the thread may skip if it is larger.
2. If there is no clearance between the needle and the looper, with the needle contacting the looper, the former will be damaged and thread break will be caused. thread may skip if the clearance is too large.

### 8-3) SETTING OF BALL JOINT ASSY. (606527A) (FIG NO. : 3)

While setting the Ball Joint (Right) or (Left) the Distance between the Center of Ball Joint (Right) and Center of Ball Joint (Left) must be 70 mm.



#### 8-4) SETTING HEIGHT OF NEEDLE BAR (FIG NO. : 4)

Adjust the height of the needle bar (606351) so that the full position of holes of Needle must coincide with the holes of Loper as shown in (fig. 4) during the Loper point's movement toward the left. The clearance between the needle and the point of looper should be 0.2 mm, when looper moves to the left and reach needle. This adjustment is done by loosening screw (606516) of looper avoid eccentric fork (606515).

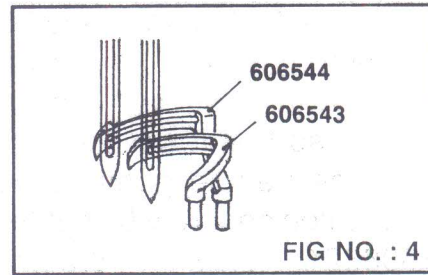


FIG NO. : 4

#### 8-5) ADJUSTING FEED DOG (FIG NO. : 5)

The height of the feed dog is correct when, at its highest point of travel, the rearmost teeth project above the throat plate by 1 mm as shown in (Fig. 5).

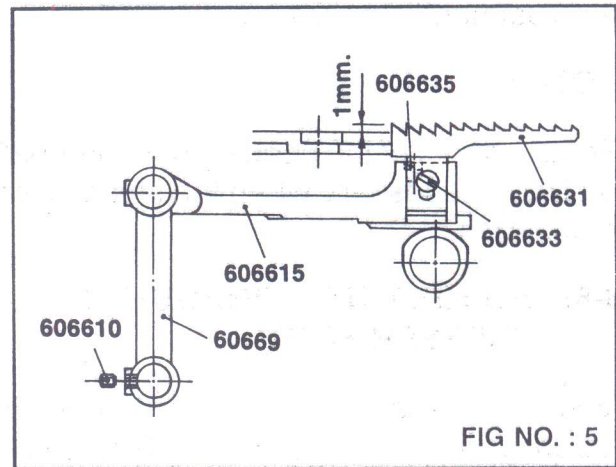


FIG NO. : 5

#### 8-6) ADJUSTING STITCH LENGTH (FIG NO. : 6)

The stitch length adjustable in the range of 6.5 to 13 mm. Your machine is set at the standard stitch length of 100mm in our plant before shipment. To adjust, loosen the nut (60668) of the stitch regulating stud (60666) which connects the feed Bar (60669) and the feed Drive Conn. Bkt. (60661), and move the stitch regulating stud vertically, as shown in (Fig. 6). Bringing down the stitch regulating stud makes the stitch longer and moving it up shorter. after the adjustment never forget to tighten the nut.

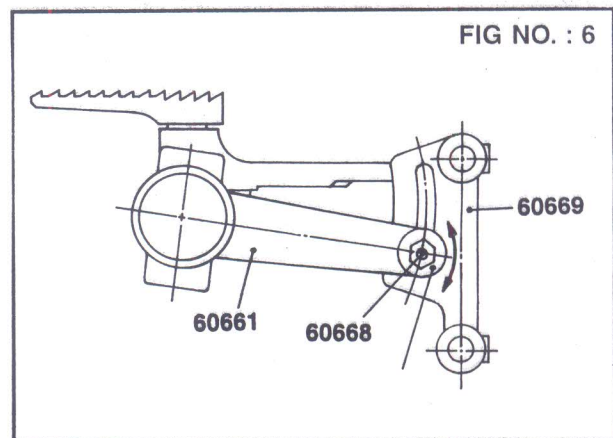


FIG NO. : 6

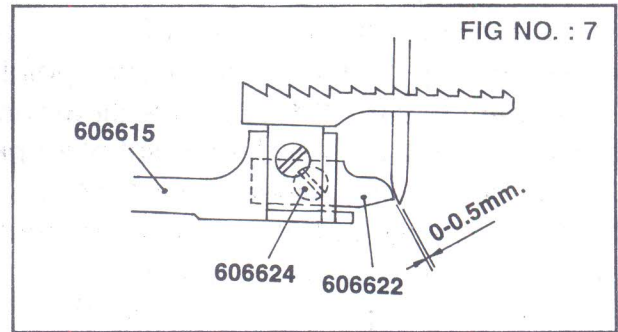
#### NOTE :

Any change in the stitch length will necessitate a corresponding change in the setting of needle guard (606622).



### 8-7) ADJUSTING NEEDLE GUARD :

Mount the Needle Guard (606622) on the feed Bar Bkt. (606615), as shown in (fig. 9), and adjust its position in the groove of the feed bar, so that it will just contact the needle as the needle goes up. Hold the guard in position securely by tightening the screw (606624). To confirm the proper adjustment, turn the pulley counterclockwise to check if the needle clicks on the guard. If it does, the guard is pushing the needle and readjustment is necessary.



### NOTE :

Readjustment of the needle guard (606622) is always necessary when the stitch length is changed.

### 8-8) ADJUSTING PRESSURE OF PRESSER FOOT :

Adjust the pressure of Pressure Foot so that feeding is Satisfactory. Relatively Strong Pressure is required. This adjustment is made by tightening or loosening of pressure foot spring screw. (60644)

## **IDENTIFICATION AND ORDERING PARTS :**

While all orders. Please include part number, part name and model name of machine.

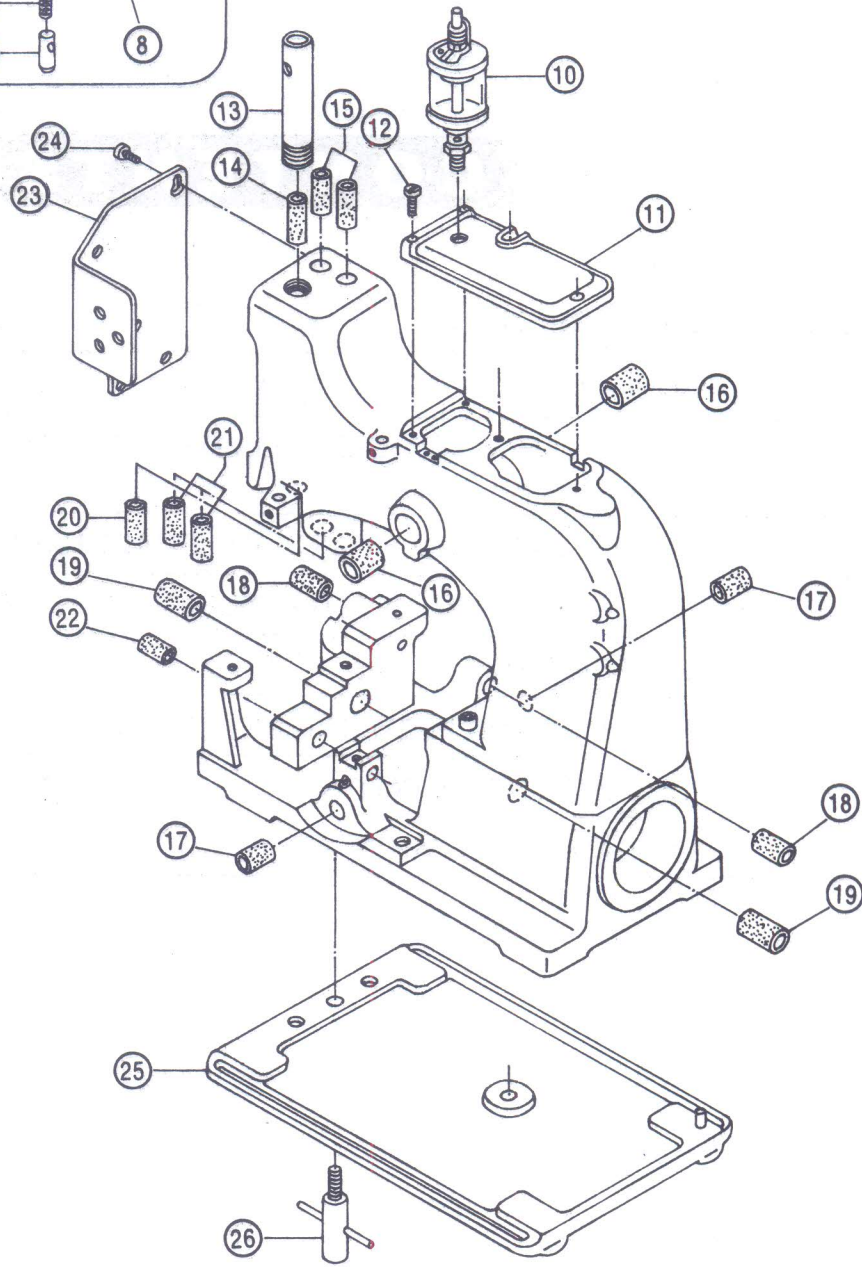
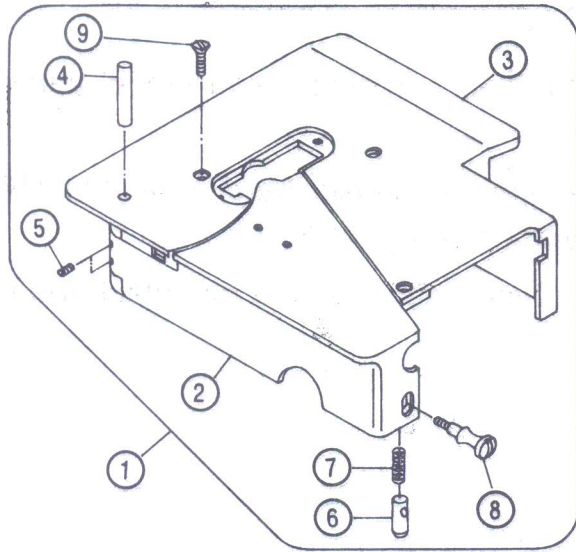
Whenever it becomes necessary to make repairs or replace parts on your machine, be sure to insist genuine "ARM STRONG" Brand Repair Parts.

These parts are designed specifically for your machine and manufactured with utmost precision to assure long lasting service.

# **C O N T E N T S**

<b>SR. NO.</b>	<b>DESCRIPTION</b>	<b>PAGE NO.</b>
1.	BUSHING, OILER & COVER PARTS	10
2.	MISCELLANEOUS THREAD GUIDE & THREAD TENSION PARTS	12
3.	NEEDLE BAR, PULLEY & CRANK SHAFT PARTS	14-16
4.	PRESSURE FOOT LIFTER & PRESSURE FOOT PARTS	18
5.	LOOPER DRIVE PARTS	20
6.	FEED LIFT AND FEED DRIVING PARTS	22
7.	OIL LUBRICATION PARTS	24
8.	THREAD STAND PARTS	26

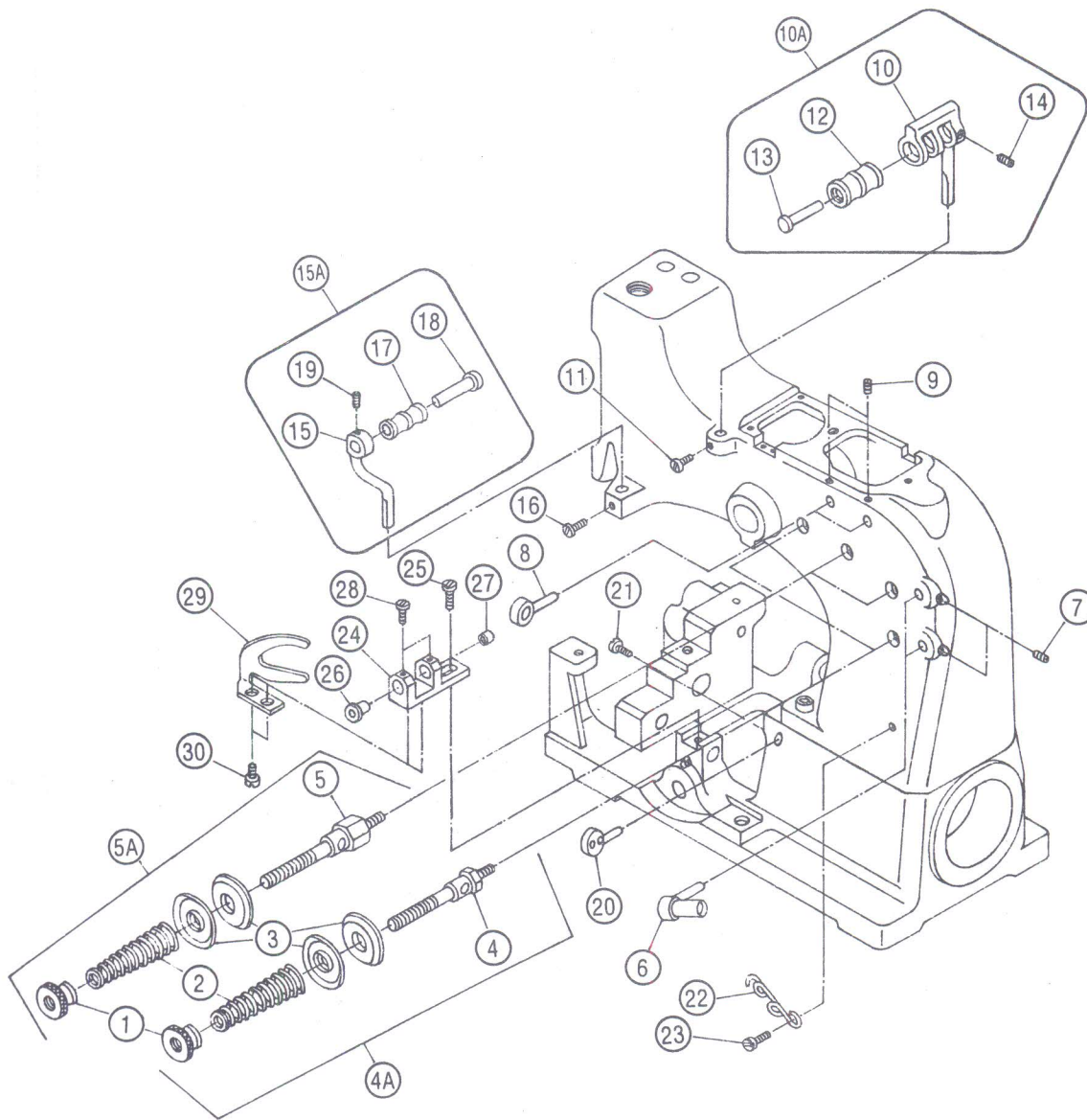
# (1) BUSHING, OILER & COVER PARTS



# (1) BUSHING, OILER & COVER PARTS

SR. NO.	PART NO.	DESCRIPTION	QTY.
1	60611	CLOTH PLATE ASSY.	1
2	60612	CLOTH PLATE SWINGING EXTENSION	1
3	60613	CLOTH PLATE	1
4	60614	PIN	1
5	60615	SCREW FOR PIN	2
6	60616	GUIDE	1
7	60617	SPRING	1
8	60618	SCREW	1
9	60619	SCREW FOR CLOTH PLATE	3
10	606110	SIGHT FEED OILER	1
11	606111	TOP COVER	1
12	606112	SCREW FOR TOP COVER	3
13	606113	GUARD FOR NEEDLE BAR	1
14	606114	BUSHING FOR NEEDLE BAR (UPPER)	1
15	606115	BUSHING FOR PRESSURE BAR (UPPER)	2
16	606116	BUSHING FOR NEEDLE BRACKET SHAFT	2
17	606117	BUSHING FOR TRANSVERSE SHAFT	2
18	606118	BUSHING FOR FEED BAR SHAFT	2
19	606119	BUSHING FOR MAIN SHAFT	2
20	606120	BUSHING FOR NEEDLE BAR (LOWER)	1
21	606121	BUSHING FOR PRESSURE BAR (LOWER)	2
22	606122	BUSHING FOR LOOPER SHAFT	2
23	606123	FACE COVER	1
24	606124	SCREW FOR FACE COVER	2
25	606125	BASE PLATE	1
26	606126	"T" SCREW	2

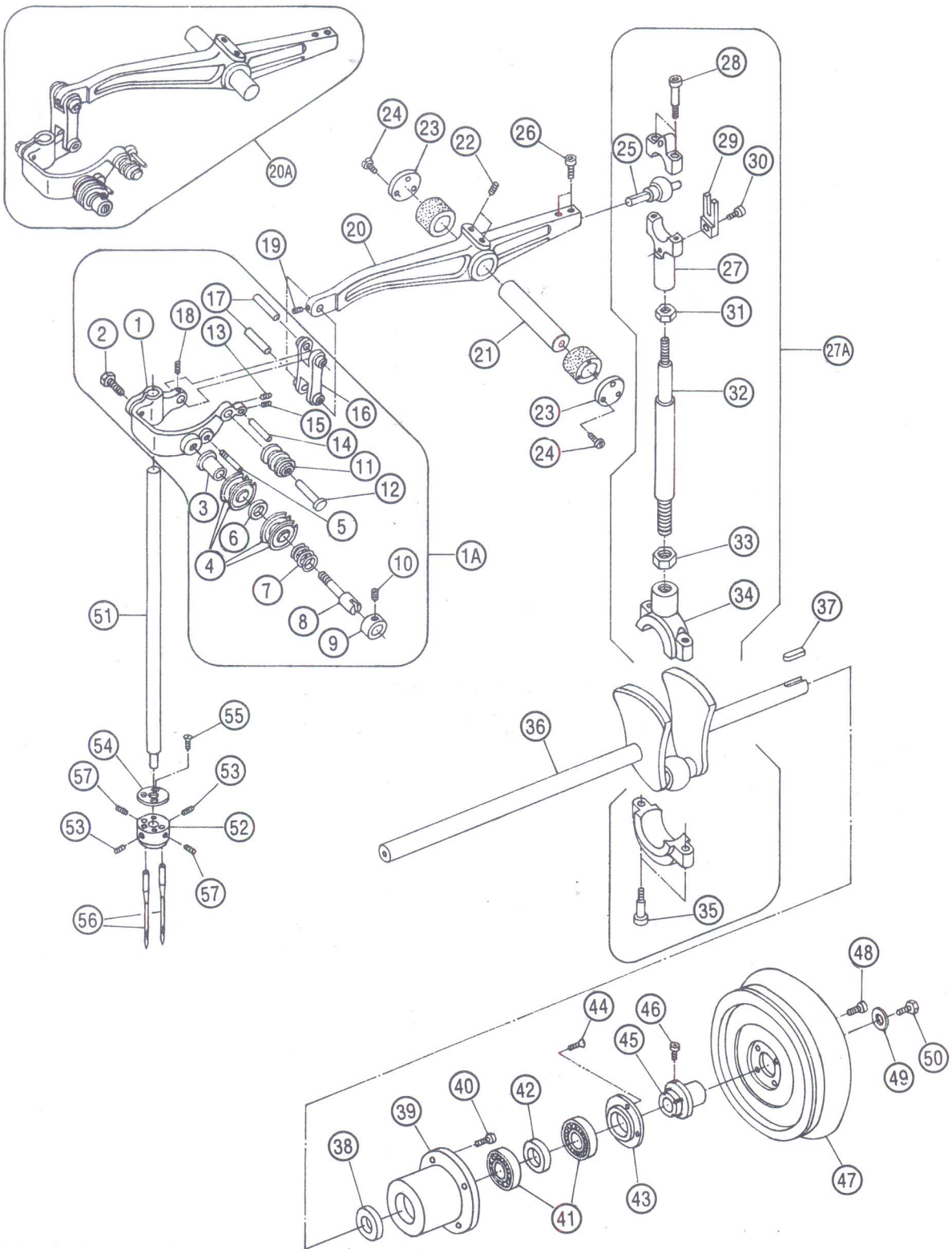
## (2) MISCELLANEOUS THREAD GUIDE & THREAD TENSION PARTS



## (2) MISCELLANEOUS THREAD GUIDE & THREAD TENSION PARTS

SR. NO.	PART NO.	DESCRIPTION	QTY.
1	60621	TENSION REGULATING NUT	4
2	60622	TENSION SPRING	4
3	60623	TENSION DISC	8
4A	60624A	TENSION UNIT ASSY. (SHORT)	2
4	60624	TENSION STUD (SHORT)	2
5A	60625A	TENSION UNIT ASSY. (LONG)	2
5	60625	TENSION STUD (LONG)	2
6	60626	THREAD SLEEVE	2
7	60627	SCREW FOR THREAD SLEEVE	2
8	60628	NEEDLE THREAD GUIDE SLEEVE	2
9	60629	SCREW FOR NEEDLE THREAD GUIDE SLEEVE	2
10A	606210A	NEEDLE THREAD GUIDE TAKE-UP ASSY.	SET
10	606210	NEEDLE THREAD GUIDE TAKE-UP	1
11	606211	SCREW FOR NEEDLE THREAD GUIDE TAKE-UP	1
12	606212	THREAD GUIDE ROLLER	1
13	606213	ROLLING THREAD GUIDE AXLE	1
14	606214	SCREW FOR ROLLING THREAD GUIDE AXLE	1
15A	606215A	THREAD ROLLER SUPPORT ASSY.	SET
15	606215	THREAD ROLLER SUPPORT	1
16	606216	SCREW FOR THREAD ROLLER SUPPORT	1
17	606217	THREAD GUIDE ROLLER	1
18	606218	ROLLING THREAD GUIDE AXLE	1
19	606219	SCREW FOR ROLLING THREAD GUIDE AXLE	1
20	606220	LOOPER THREAD EYELET	1
21	606221	SCREW FOR LOOPER THREAD EYELET	1
22	606222	LOOPER THREAD GUIDE	1
23	606223	SCREW FOR LOOPER THREAD GUIDE	1
24	606224	LOOPER THREAD GUIDE BRACKET	1
25	606225	SCREW FOR LOOPER THREAD GUIDE BKT.	1
26	606226	LOOPER THREAD GUIDE BUSH (FRONT)	1
27	606227	LOOPER THREAD GUIDE BUSH (REAR)	1
28	606228	SCREW FOR LOOPER THREAD GUIDE BUSH	2
29	606229	LOOPER THREAD RETAINING FINGER	1
30	606230	SCREW FOR LOOPER THREAD RETAINING FINGER	2

# (3) NEEDLE BAR, PULLEY & CRANK SHAFT PARTS

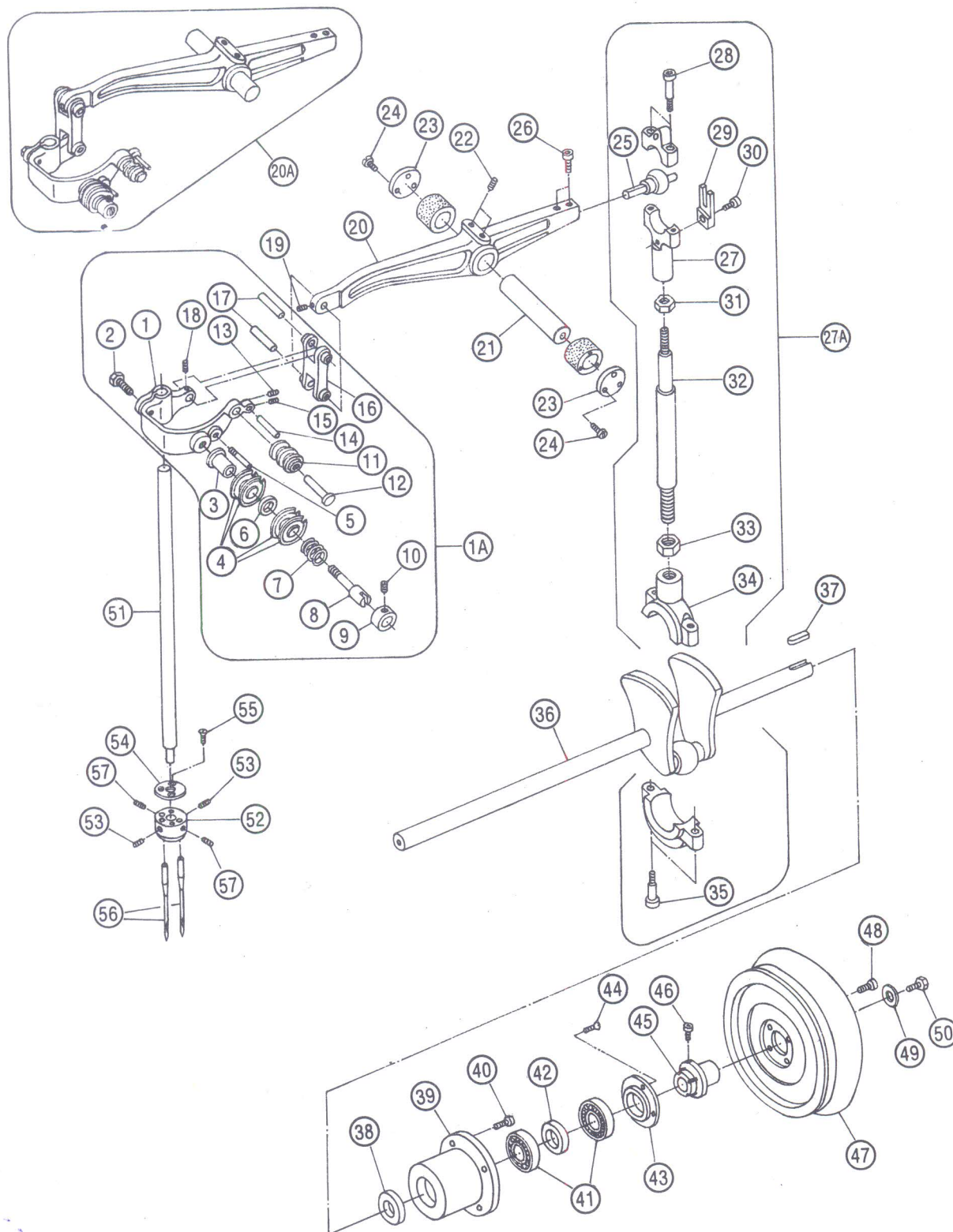


### (3) NEEDLE BAR, PULLEY & CRANK SHAFT PARTS

SR. NO.	PART NO.	DESCRIPTION	QTY.
1A	60631A	NEEDLE BAR CONN. BKT. ASSY.	1
1	60631	NEEDLE BAR CONN. BKT.	1
2	60632	SCREW FOR NEEDLE BAR CONN. BKT.	1
3	60633	TENSION DISC BUSH	1
4	60634	TENSION DISC	4
5	60635	PIN SCREW	1
6	60636	WASHER	1
7	60637	TENSION SPRING	1
8	60638	TENSION STUD	1
9	60639	COLLAR	1
10	606310	SCREW FOR COLLAR	1
11	606311	THREAD GUIDE ROLLAR	1
12	606312	THREAD GUIDE ROLLAR AXLE	1
13	606313	SCREW FOR THREAD GUIDE ROLLAR AXLE	1
14	606314	THREAD GUIDE PIN	1
15	606315	SCREW FOR THREAD GUIDE PIN	1
16	606316	NEEDLE BAR CONN. LINK	1
17	606317	NEEDLE BAR CONN. LINK PIN	2
18	606318	SCREW FOR NEEDLE BAR CONN. LINK PIN	1
19	606319	SCREW FOR NEEDLE BAR CONN. LINK PIN	1
20A	606320A	NEEDLE BAR DRIVING CRANK BKT. ASSY.	1
20	606320	NEEDLE BAR DRIVING CRANK BKT.	1
21	606321	NEEDLE BAR DRIVING CRANK BKT. SHAFT	1
22	606322	SCREW FOR NEEDLE BAR DRIVING CRANK BKT. SHAFT	2
23	606323	NEEDLE BAR DRIVING CRANK BKT. SHAFT COLLAR WASHER	2
24	606324	SCREW FOR NEEDLE BAR DRIVING CRANK BKT. SHAFT COLLAR WASHER	6
25	606325	BALL STUD	1
26	606326	SCREW FOR BALL STUD	2
27A	606327A	NEEDLE LEVER CONN. ROD BKT. ASSY.	1
27	606327	NEEDLE LEVER CONN. ROD BKT. (SMALL)	1
28	606328	SCREW FOR NEEDLE LEVER CONN. ROD BKT. (SMALL)	2
29	606329	BALL STUD GUIDE	1
30	606330	SCREW BALL STUD GUIDE	1
31	606331	NUT FOR NEEDLE LEVER CONN. ROD BKT. (SMALL)	1
32	606332	NEEDLE LEVER CONN. ROD	1
33	606333	NUT FOR NEEDLE LEVER CONN. ROD BKT. (BIG)	1
34	606334	NEEDLE LEVER CONN. ROD BKT. (BIG)	1
35	606335	SCREW FOR NEEDLE LEVER CONN. ROD BKT. (BIG)	2
36	606336	CRANK SHAFT	1
37	606337	KEY FOR CRANK SHAFT	1
38	606338	OIL SEAL	1
39	606339	BEARING HOUSING	1



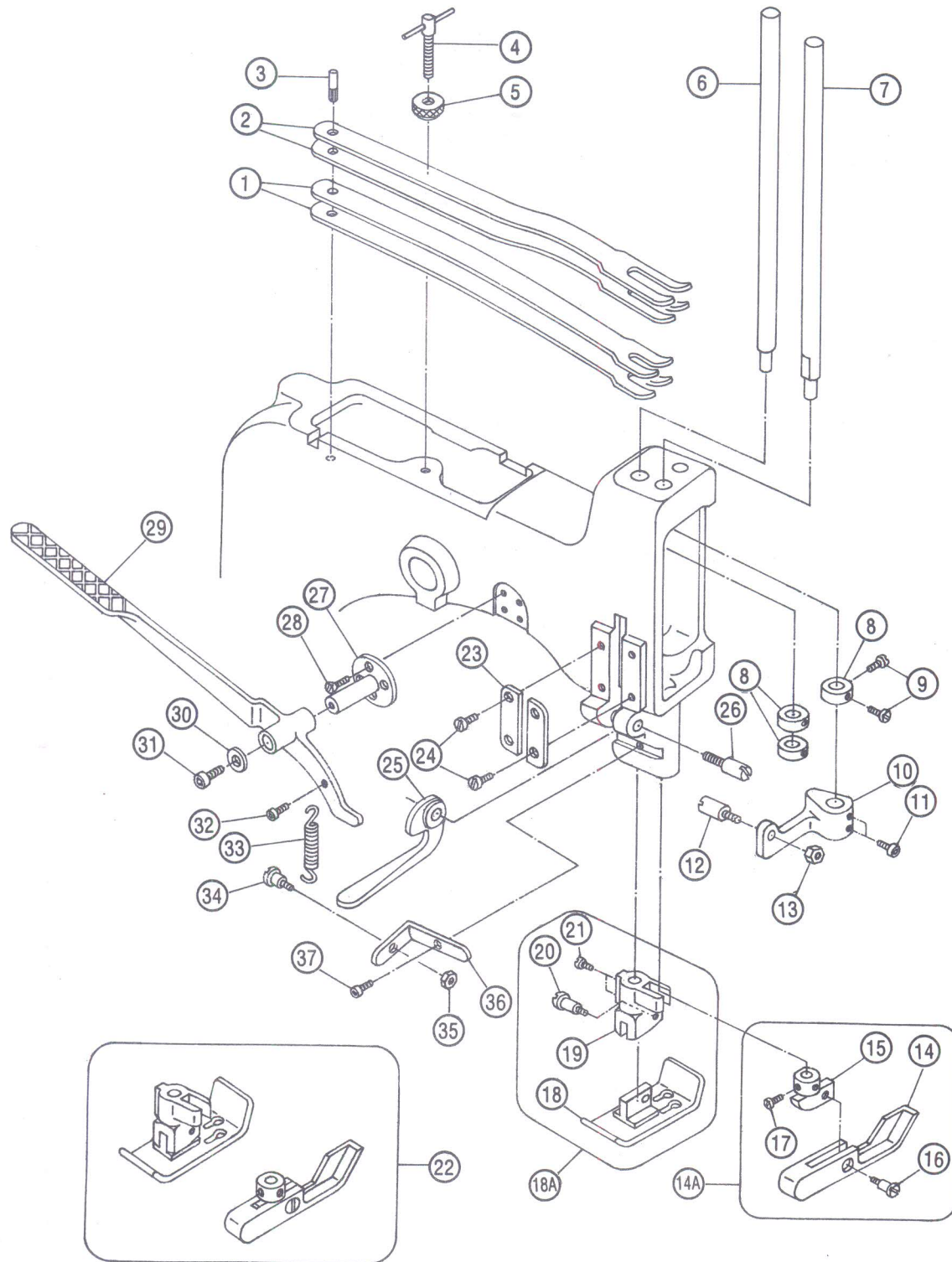
# (3) NEEDLE BAR, PULLEY & CRANK SHAFT PARTS



### (3) NEEDLE BAR, PULLEY & CRANK SHAFT PARTS

SR. NO.	PART NO.	DESCRIPTION	QTY.
40	606340	SCREW FOR BEARING HOUSING	4
41	606341	BALL BEARING (6302ZZ)	2
42	606342	BEARING DISTANCE COLLAR	1
43	606343	BEARING HOUSING COVER	1
44	606344	SCREW FOR BEARING HOUSING COVER	4
45	606345	PULLEY HOLDER	1
46	606346	SCREW FOR PULLEY HOLDER	2
47	606347	MACHINE PULLEY	1
48	606348	SCREW FOR MACHINE PULLEY	4
49	606349	PULLEY WASHER	1
50	606350	SCREW FOR PULLEY WASHER	1
51	606351	NEEDLE BAR	1
52	606352	NEEDLE HOLDER	1
53	606353	SCREW FOR NEEDLE BAR	2
54	606354	NEEDLE STOP COVER	1
55	606355	SCREW FOR NEEDLE STOP COVER	2
56	606356	NEEDLE (DRX2-28)	2
57	606357	SCREW FOR NEEDLE	2

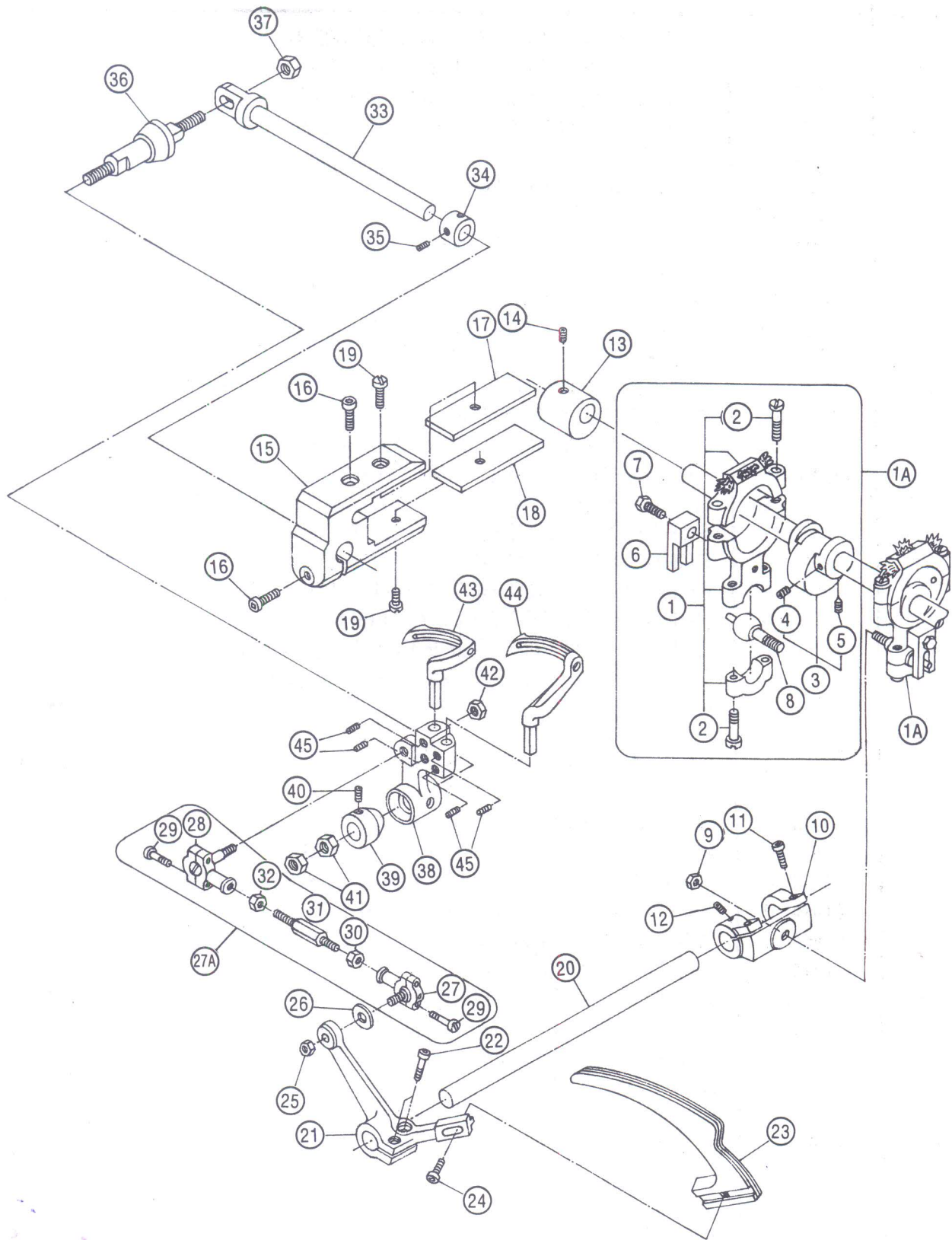
# (4) PRESSURE FOOT LIFTER & PRESSURE FOOT PARTS



## (4) PRESSURE FOOT LIFTER & PRESSURE FOOT PARTS

SR. NO.	PART NO.	DESCRIPTION	QTY.
1	60641	PRESSURE FOOT SPRING (LOWER)	2
2	60642	PRESSURE FOOT SPRING (UPPER)	2
3	60643	PIN FOR PRESSURE FOOT SPRING	1
4	60644	SCREW FOR PRESSURE FOOT SPRING	1
5	60645	LOCK NUT	1
6	60646	PRESSURE BAR (RIGHT)	1
7	60647	PRESSURE BAR (LEFT)	1
8	60648	PRESSURE BAR COLLAR	3
9	60649	SCREW FOR PRESSURE BAR COLLAR	6
10	606410	PRESSURE BAR GUIDE	1
11	606411	SCREW FOR PRESSURE BAR GUIDE	2
12	606412	PRESSURE FOOT LIFTER LEVER STOP SCREW	1
13	606413	NUT FOR PRESSURE FOOT LIFTER LEVER STOP SCREW	1
14A	606414A	PRESSURE FOOT ASSY. (LEFT)	1
14	606414	PRESSURE FOOT BOTTOM (LEFT)	1
15	606415	PRESSURE FOOT SHANK (LEFT)	1
16	606416	SCREW FOR PRESSURE FOOT BOTTOM (LEFT)	1
17	606417	SCREW FOR PRESSURE FOOT SHANK (LEFT)	2
18A	606418A	PRESSURE FOOT ASSY. (RIGHT)	1
18	606418	PRESSURE FOOT BOTTOM (RIGHT)	1
19	606419	PRESSURE FOOT SHANK (RIGHT)	1
20	606420	SCREW FOR PRESSURE FOOT BOTTOM (RIGHT)	1
21	606421	SCREW FOR PRESSURE FOOT SHANK (RIGHT)	2
22	606422	PRESSURE FOOT ASSY.	1
23	606423	GUIDE PLATE	2
24	606424	SCREW FOR GUIDE PLATE	4
25	606425	PRESSURE FOOT LIFTER	1
26	606426	SCREW FOR PRESSURE FOOT LIFTER	1
27	606427	PRESSURE FOOT LIFTER LEVER BKT.	1
28	606428	SCREW FOR PRESSURE FOOT LIFTER LEVER BKT.	4
29	606429	PRESSURE FOOT LIFTER LEVER	1
30	606430	WASHER FOR PRESSURE FOOT LIFTER LEVER	1
31	606431	SCREW FOR WASHER	1
32	606432	SCREW FOR PRESSURE FOOT LIFTER LEVER SPRING	1
33	606433	SPRING FOR PRESSURE FOOT LIFTER LEVER	1
34	606434	SCREW FOR SPRING	1
35	606435	NUT FOR SCREW	1
36	606436	SPRING SUPPORTER	1
37	606437	SCREW FOR SPRING SUPPORTER	1

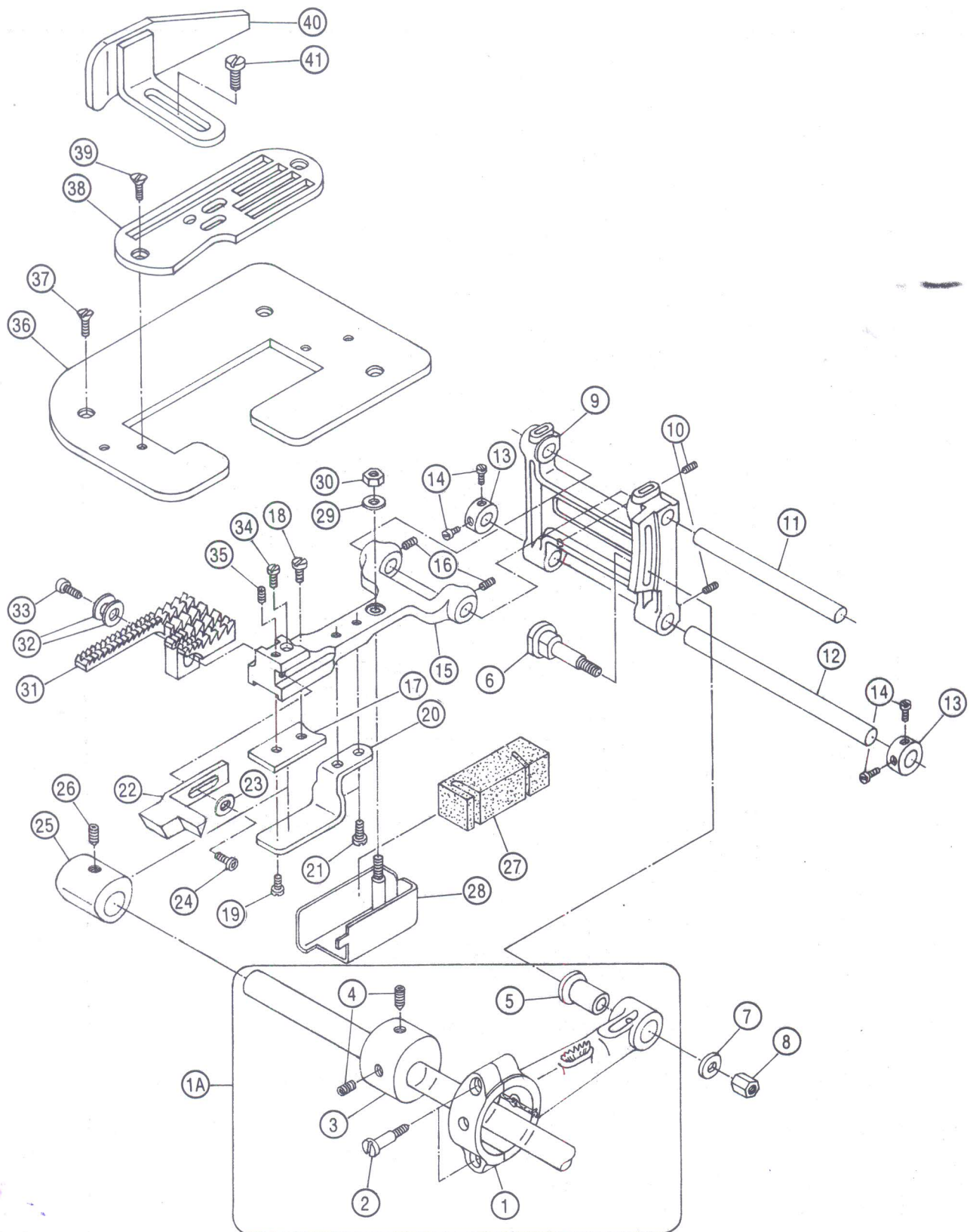
# (5) LOOPER DRIVE PARTS



## (5) LOOPER DRIVE PARTS

SR. NO.	PART NO.	DESCRIPTION	QTY.
1A	60651A	ECCENTRIC ASSY.	1
1	60651	CONNECTING BEARING	1
2	60652	SCREW FOR CONN. BEARING	4
3	60653	ECCENTRIC	1
4	60654	SCREW FOR ECCENTRIC	1
5	60655	SCREW FOR ECCENTRIC	1
6	60656	BALL STUD GUIDE	1
7	60657	SCREW FOR BALL STUD GUIDE	1
8	60658	BALL STUD SCREW	1
9	60659	NUT FOR BALL STUD SCREW	1
10	606510	DRIVE LEVER	1
11	606511	SCREW FOR DRIVE LEVER	2
12	606512	SCREW FOR DRIVE LEVER	2
13	606513	LOOPER DRIVE ECCENTRIC	1
14	606514	SCREW FOR LOOPER DRIVE ECCENTRIC	1
15	606515	LOOPER AVOID ECCENTRIC FORK	1
16	606516	SCREW FOR LOOPER AVOID ECCENTRIC FORK	2
17	606517	LOOPER AVOID ECCENTRIC SHOE (UPPER)	1
18	606518	LOOPER AVOID ECCENTRIC SHOE (LOWER)	1
19	606519	SCREW FOR LOOPER AVOID ECCENTRIC SHOE	2
20	606520	LOOPER DRIVE LEVER SHAFT	1
21	606521	LOOPER DRIVE LEVER	1
22	606522	SCREW FOR LOOPER DRIVE LEVER	2
23	606523	LOOPER THREAD TAKE-UP	1
24	606524	SCREW FOR LOOPER THREAD TAKE-UP	1
25	606525	NUT FOR BALL JOINT ASSY. (RIGHT)	1
26	606526	WASHER FOR BALL JOINT ASSY. (RIGHT)	1
27A	606527A	BALL JOINT ASSY. (RIGHT & LEFT)	1
27	606527	BALL JOINT ASSY. (RIGHT)	1
28	606528	BALL JOINT ASSY. (LEFT)	1
29	606529	SCREW FOR BALL JOINT ASSY. (RIGHT & LEFT)	4
30	606530	NUT FOR BALL JOINT ASSY. (RIGHT)	1
31	606531	CONNECTING ROD	1
32	606532	NUT FOR BALL JOINT ASSY. (LEFT)	1
33	606533	LOOPER HOLDER SHAFT	1
34	606534	LOOPER HOLDER SHAFT COLLAR	1
35	606535	SCREW FOR COLLAR	2
36	606536	LOOPER HOLDER PIN	1
37	606537	NUT FOR LOOPER HOLDER PIN	1
38	606538	LOOPER HOLDER BKT.	1
39	606539	COLLAR FOR LOOPER HOLDER BKT.	1
40	606540	SCREW FOR COLLAR	1
41	606541	NUT FOR COLLAR	2
42	606542	NUT FOR BALL JOINT ASSY. (LEFT)	1
43	606543	LOOPER (SMALL)	1
44	606544	LOOPER (BIG)	1
45	606545	SCREW FOR LOOPER	4

# (6) FEED LIFT AND FEED DRIVING PARTS

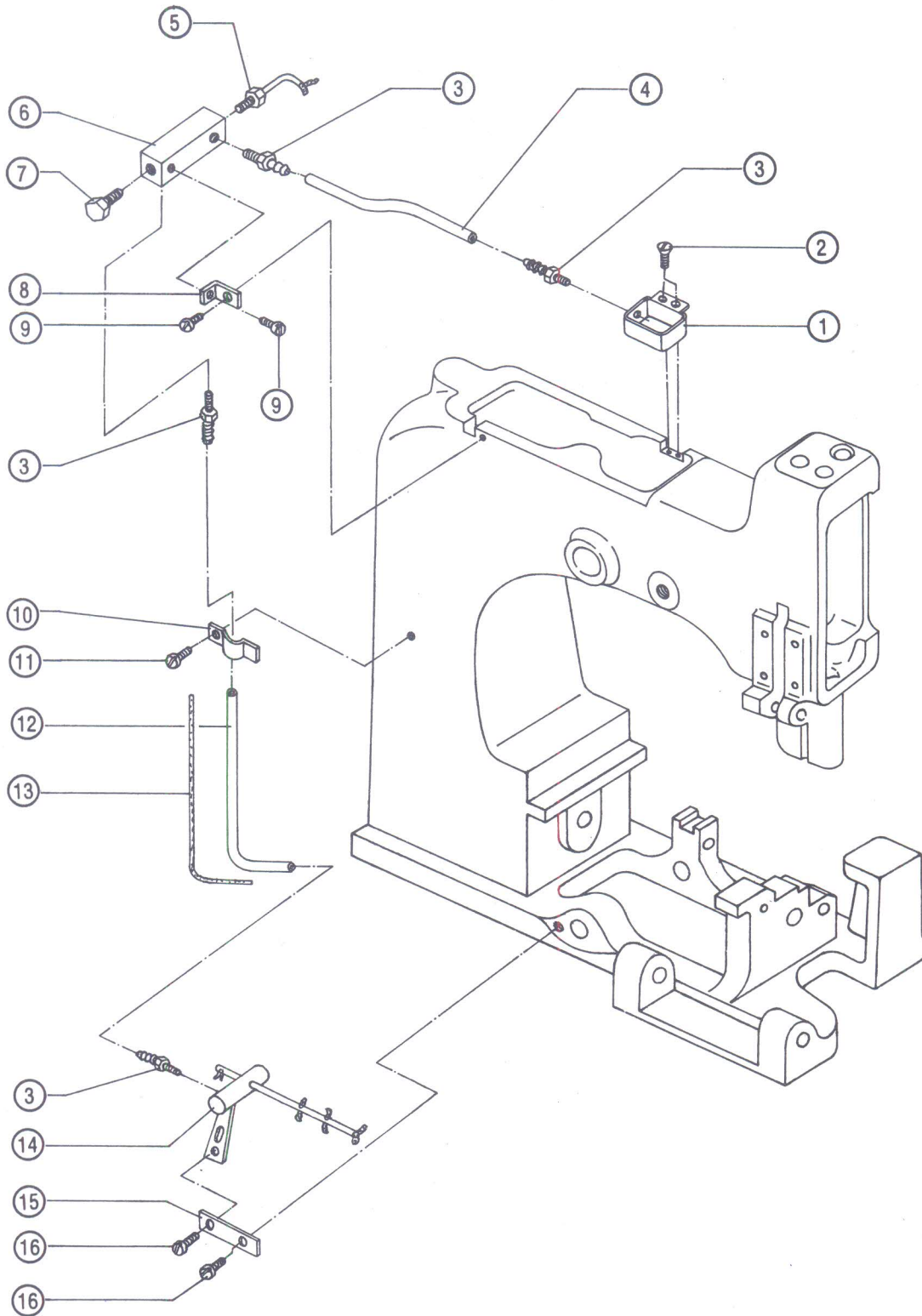


## (6) FEED LIFT AND FEED DRIVING PARTS

SR. NO.	PART NO.	DESCRIPTION	QTY.
1A	60661A	FEED DRIVE ECCENTRIC ASSY.	1
1	60661	FEED DRIVE CONNECTING BRACKET	1
2	60662	SCREW FOR FEED DRIVE CONN. BKT.	2
3	60663	FEED DRIVE ECCENTRIC	1
4	60664	SCREW FOR FEED DRIVE ECCENTRIC	2
5	60665	BUSHING FOR FEED DRIVE CONN. BKT.	1
6	60666	STITCH REGULATING STUD	1
7	60667	WASHER FOR STITCH REGULATING STUD	1
8	60668	NUT FOR STITCH REGULATING STUD	1
9	60669	FEED BAR	1
10	606610	SCREW FOR FEED BAR	2
11	606611	FEED BAR PIN	1
12	606612	FEED BAR SHAFT	1
13	606613	FEED BAR SHAFT COLLAR	2
14	606614	SCREW FOR FEED BAR SHAFT COLLAR	4
15	606615	FEED BAR BKT.	1
16	606616	SCREW FOR FEED BAR BKT.	2
17	606617	FEED BAR SHOE	1
18	606618	SCREW FOR FEED BAR SHOE	1
19	606619	SCREW FOR FEED BAR SHOE	1
20	606620	FEED BAR PRONG	1
21	606621	SCREW FOR FEED BAR PRONG	2
22	606622	NEEDLE GUARD	1
23	606623	WASHER FOR NEEDLE GUARD	1
24	606624	SCREW FOR NEEDLE GUARD	1
25	606625	FEED LIFT ECCENTRIC	1
26	606626	SCREW FOR FEED LIFT ECCENTRIC	1
27	606627	OIL FELT	1
28	606628	HOLDER FOR OIL FELT	1
29	606629	WASHER FOR OIL FELT HOLDER	1
30	606630	NUT FOR OIL FELT HOLDER	1
31	606631	FEED DOG	1
32	606632	WASHER FOR FEED DOG	1
33	606633	SCREW FOR FEED DOG	1
34	606634	SCREW FOR FEED DOG SUPPORT	1
35	606635	SCREW FOR FEED DOG ADJUSTMENT	1
36	606636	THROAT PLATE SUPPORTER	1
37	606637	SCREW FOR THROAT PLATE SUPPORTER	3
38	606638	THROAT PLATE	1
39	606639	SCREW FOR THROAT PLATE	2
40	606640	EDGE GUIDE	1
41	606641	SCREW FOR EDGE GUIDE	2



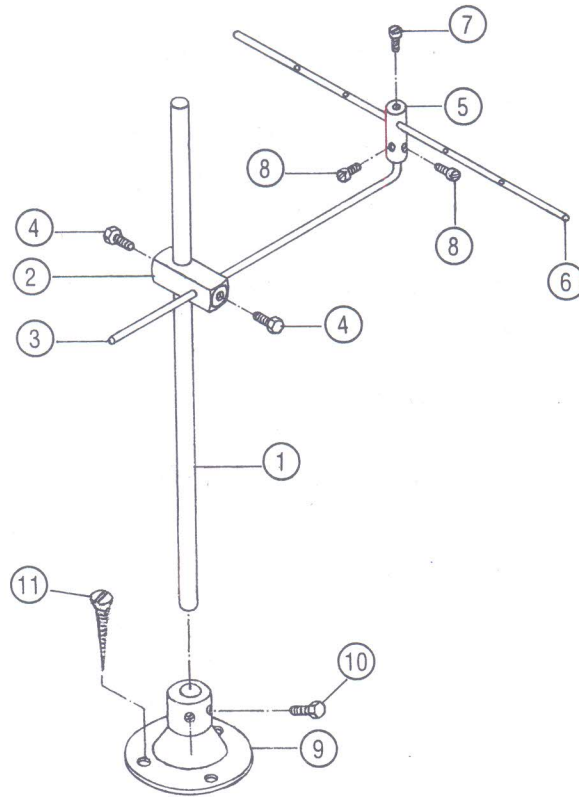
# (7) OIL LUBRICATION PARTS



## (7) OIL LUBRICATION PARTS

SR. NO.	PART NO.	DESCRIPTION	QTY.
1	60671	OIL RESERVOIR	1
2	60672	SCREW FOR OIL RESERVOIR	2
3	60673	OIL TUBE FITTING KNOB	4
4	60674	OIL TUBE	1
5	60675	OIL DISTRIBUTING MEMBER (A)	1
6	60676	OIL DISTRIBUTOR	1
7	60677	SCREW FOR OIL DISTRIBUTOR	1
8	60678	OIL DISTRIBUTOR CLAMP	1
9	60679	SCREW FOR OIL DISTRIBUTOR CLAMP	2
10	606710	OIL TUBE CLAMP	1
11	606711	SCREW FOR OIL TUBE CLAMP	1
12	606712	OIL TUBE	1
13	606713	OIL FELT	1
14	606714	OIL DISTRIBUTING MEMBER (B)	1
15	606715	FITTING CLAMP	1
16	606716	SCREW FOR FITTING CLAMP	2

# (8) THREAD STAND PARTS



## (8) THREAD STAND PARTS

SR. NO.	PART NO.	DESCRIPTION	QTY.
1	60681	MAIN ROD	1
2	60682	THREAD GUIDE HOLDER	1
3	60683	THREAD GUIDE BAR 'L' TYPE	1
4	60684	SCREW FOR THREAD GUIDE HOLDER	2
5	60685	THREAD GUIDE BAR BRACKET	1
6	60686	THREAD GUIDE (BIG)	1
7	60687	SCREW FOR THREAD GUIDE (BIG)	1
8	60688	SCREW FOR THREAD GUIDE BAR BRACKET	2
9	60689	THREAD STAND BASE	1
10	606810	SCREW FOR MAIN ROD	2
11	606811	SCREW FOR THREAD STAND BASE	3

# PACKING LIST OF "**ARM STRONG**" MACHINE ACCESSORIES

1.	MACHINE BASE PLATE	1
2.	THREAD STAND COMPLETE SET	1
3.	MACHINE PULLEY	1
4.	'V' BELT	1
5.	SIGHT FEED OILER	1
6.	ALLEN KEY WRENCH 'T' TYPE	5
7.	ALLEN KEY WRENCH 'L' TYPE	5
8.	FIX SPANNER (8X10)	1
9.	SCISSOR	1
10.	OIL CAN	1
11.	PLUCKER	1
12.	SCREW DRIVER	1
13.	BRUSH	1
14.	INSTRUCTION MANNUAL & PARTS LIST BOOKLET	1

Manufactured By :

 **Gabbar  
Engineering Co.**

Plot No. 1903, Phase III, G.I.D.C., Vatwa, Ahmedabad - 382 445. GUJARAT-INDIA  
PHONE : Fact. : 91-79-2583 0971, 2589 1657 Fax : 91-79-2583 2000, 2589 2277  
E-mail : umesh@gabbar.com • marketing@gabbar.com • gabbar@gabbar.com  
Website : <http://www.gabbar.com>